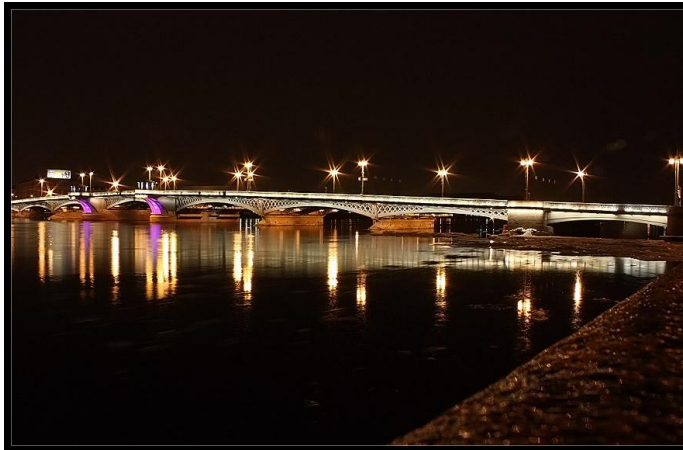


The Center for Excellence in Curricular Engagement
SOCIAL DEVELOPMENT PLAN
STAGE A: PUBLIC ART PROPOSAL

November 2010



ACKNOWLEDGEMENTS

Action School, Inc., expresses thanks to Sunshine LLP, Idealist, Orphan's Bright Star, Evocations.org, VolunteerMatch, Kysa Siovan, Jill Fein, Janaina Galhardo, Leslie Wagle, Veronika Kish Boyd, Xiaonan Tong, David Phelps, Josh Batten, Cenovia Skeete, Jack Threadgill, Michele F. Venturini, Kimberly Perry, Cheryl L. Heflin, Fran Salman, Diana Mykris, Pratik Patkar, Chatfield Vernier Elizabeth, Robert Amaral and many other partners and volunteers for their generous contribution of time and professional skills as well as their long and dedicated participation in the Development Committee's plan, the "Center for Excellence in Curricular Engagement."

www.actionsch.com all rights reserved.

Table of Contents

<i>ACKNOWLEDGEMENTS</i>	2
<i>EXECUTIVE SUMMARY</i>	4
<i>PROJECT LOCATION & STAGES</i>	6
<i>APPROACH</i>	9
<i>OVERVIEW, SPECIFICS & DETAILS</i>	10
<i>CONCLUSION</i>	19
<i>TIMETABLE</i>	20
<i>BUDGET</i>	21
<i>RELATED RESOURCES</i>	22
<i>ABOUT US</i>	23

EXECUTIVE SUMMARY

This document offers a thrilling glimpse into a visionary plan for the public art project called the “Center for Excellence in Curricular Engagement” (the Center). Like past achievements, this plan owes its existence to the vision of civic and community leaders who understand that beautiful parks and attractive spaces that house enhanced learning activities are a critical part of fostering the health of our society and our children, maintaining the quality of our neighborhoods, and protecting the welfare of our country.

In this proposal, the Action School developed an overall schematic design that creates and maintains a coherent vision for the entire area of Anacostia Park to be integrated into the Center for Excellence in Curricular Engagement.



Picture 1. A bird’s eye view from a southeast vantage point

The picture shows (from center left to right): the Frederick Douglass Passageway, the Action School Plaza (with a shaded promenade in the center and a beautiful French-inspired garden), the Anthropology Museum (at center), the shaded embankment alley stretching along the Anacostia River, and the Battleship Museum; (from lower left to center): The Park of Fountains, Sculptures and Waterfalls, where paths meander among statues and water features and a labyrinth of trails

connect outdoor exhibitions with concert and dance venues— all among colorful autumn leaves and a myriad of fountains.

The Center for Excellence in Curricular Engagement is a win-win project for the community. It will have a positive impact on education, health care, human services, infrastructure, and the environment. The creation of new jobs will boost the local economy and foster the development of small businesses. Job opportunities will open up for low- and moderately-skilled workers as well as for people with disabilities, seniors, and veterans. Opening a school, a library, and the Technical Science & Applied Creativity Center, will expand potential opportunity for teachers, including music teachers. We also anticipate creating new permanent jobs at museums, exhibitions, schools, clubs, the library, children’s center and studios, shops, a café, restaurants, river trams, gardens, and many others.

All objects developed and created according to this proposal will utilize the most recent scientific materials and technologies, e.g. a photovoltaic system will be used as the main source of electricity in the park, powering all water fountains, waterfalls, lights & illuminations; all pavements and a large surfaces will use “green technology” to save a large amount of energy on heating & cooling systems.

As we are committed to children, our endeavors focus on creative opportunities for them. Thus, by this proposal the following will be built: a skating rink, music school, Battleship Museum, Anthropology of Art & Natural Curiosity Museum, an Exhibition & Convention Center, puppetry, circus, cinemas and theater - all designed for children. A Live Space Exploration Center, Children's TV Station, Children's Film Studio, a Technical Science & Applied Creativity Center, Children's Publishing House, playgrounds, and a kids’ café will provide entertainment and extra learning opportunities.

Once the Curricular Engagement Program is developed, a great opportunity will open for composers and songwriters, authors of fairy tales, children's writers, clowns, magicians-illusionists, art workers, artists, singers, musicians, filmmakers, sound engineers, photographers, journalists, illustrators, graphic designers and many other unique professions.

Our rigorous design process ensures that before the work ever begins, we will have scrutinized every step in the scheduling process to facilitate a seamless delivery of the project, allowing a focus on retail operations while we show how great service and superior quality can still come with competitive results. Our engagement includes managing all requests for model proposals from interested design and construction firms/teams on contest basis.

As a result, this Center will be converted into a tangible symbol of renewal and an expression of how our culture can help restore the natural functions of our landscape and fortify the economic stability in the area. The new appearance of Anacostia Park—a vast topography of rolling landscape and meandering river beds—will add a layer of richness and complexity that might seem improbable within the dense urban fabric of the District of Columbia. Visitors will feel immersed in a vibrant landscape of an imaginatively designed, mixed open space.

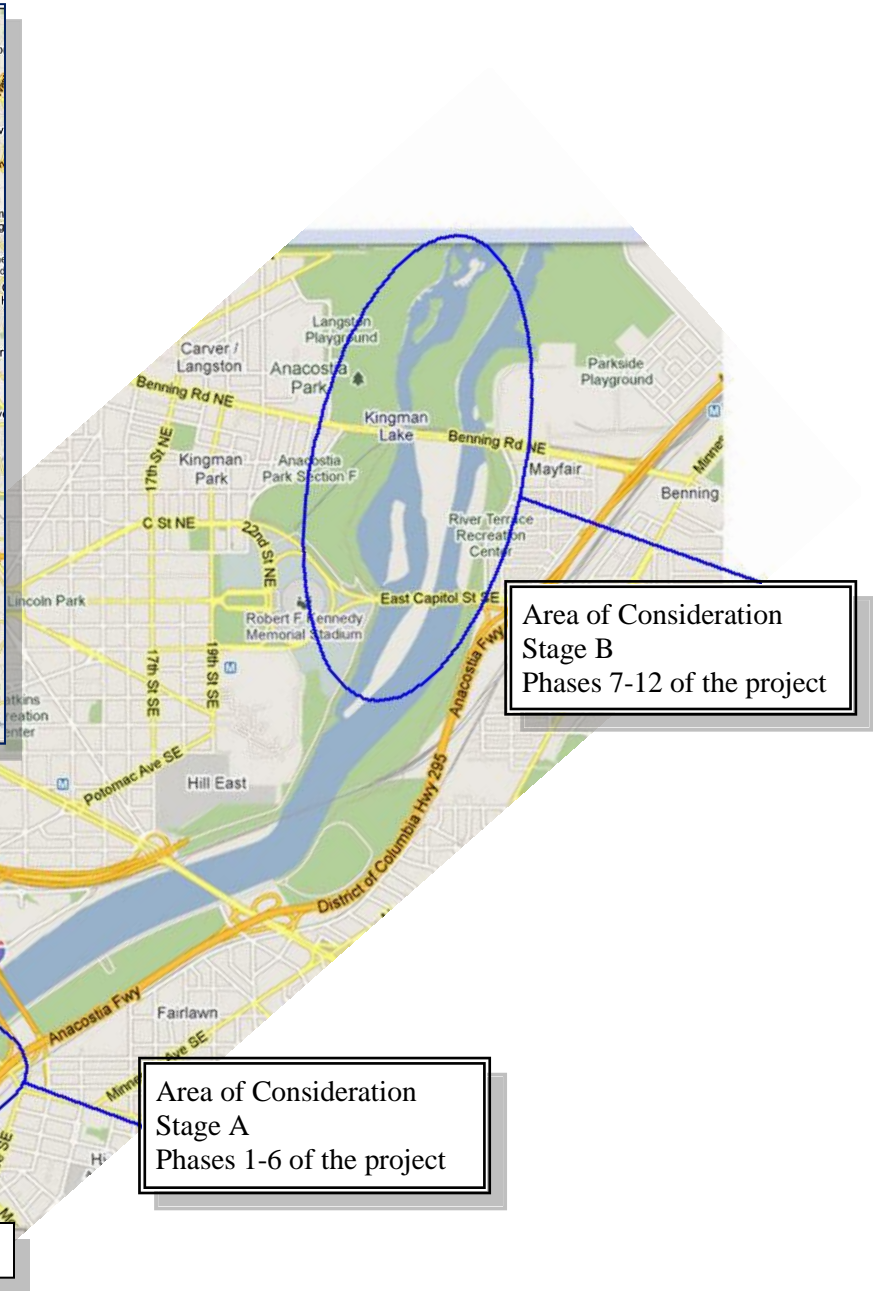
PROJECT LOCATION & STAGES

Pictures 2 and 3 below indicate the suggested project location and slated stages of development.

Note: this document is focusing on Stage A of the Project. Stage B will be proposed later (Pic3).



Picture 2. Project area location



Picture 3. Project Stages

The Action School Proposal highlights local landmarks and provides a clearly defined pedestrian corridor to enhance public access along the waterfront. See Picture 4 on page 8 for more conceptual details of Stage A of the Project.

Stage A of the project has been broken down into six phases:

❖ Phase 1

Create an Action School Plaza,⁽⁶⁾ a revitalized, attractive, and easily accessible pedestrian-oriented compound, located on a sharp outer bend of the Anacostia River alongside the Battleship Museum.⁽⁴⁾ Strategically, the Battleship Museum is the first part of the phase to be implemented.

❖ Phase 2

Develop a pedestrian connection⁽¹²⁾ from the Frederick Douglass Bridge through the plaza to the Battleship Museum. Sidewalks set within shaded embankments⁽³⁾ will stretch approximately 4,500 feet along the river between the plaza and the 11th Street Bridge, occasionally broken up by ramps to the waterfront⁽¹⁾ and dotted by charming gazebos⁽²⁾.

❖ Phase 3

Enhance the upper level of the Plaza⁽⁹⁾, designated for the Sculpture Garden & Promenade⁽⁵⁾ as well as the Performance Stage Facility⁽⁷⁾, which will be devoted to all kinds of events and exhibitions. Embellish existing structures, such as bridges, paths, light fixtures, and buildings; re-grade the surrounding landscape; install a graphic display that outlines plans for the future wharf⁽¹³⁾; and accommodate the lower level⁽⁹⁾ of the Plaza.

Implement the Action School's plan, based on a broad consensus, for providing innovative learning opportunities that will be immediately available upon completion of this phase.

❖ Phase 4

Lay the foundation for the Anna-Marie Chapel and Saint Denis-Nicholas Cathedral⁽¹⁰⁾, which will be in essence the Anthropology of Art & Natural Curiosity Museum, as part of the first step in bringing to life the "Center for Excellence in Curricular Engagement". Build the Children of Hope mirrored fountains⁽⁸⁾ located on either end of the Plaza to frame the Cathedral Tower.

❖ Phase 5

Construct the Park of Fountains, Cascades & Statues⁽¹¹⁾ behind the Anthropology of Art & Natural Curiosity Museum. A beautiful area of cascading waterfalls and spectacular water fountains with an interactive fountain for kids, the Park of Fountains will invite visitors to relax and encourage them to return again and again. It will be the culmination of Stage A of the project and will fulfill the primary objectives of improving the pedestrian connection between downtown and Anacostia Park with enhanced views of the waterfront and improved landscaping overall. Once this phase is completed, there will be four separate attractions on the site: The Battleship Museum, the Action School Plaza, the Anthropology of Art & Natural Curiosity Museum, and the Park of Fountains.

❖ Phase 6

Erect the Frederick Douglass Monument to commemorate the noble truths upon which the United States was founded, to portray the horrors of slavery, and to call upon all Americans to make the freedom and justice celebrated each Fourth of July an every-day reality for our country. Other thematic memorials devoted to the country's heroic events will also be integrated during this phase.

Improve the Anacostia Metro Station area to face the Park of Fountains venue within the proposed Anacostia Village; upgrade the parking lot by providing additional parking for special events and weekends when volume is high. **Note:** the park is not for cars.

A competitive challenge offered to artist-led design teams will address lighting the bridge to enliven the public environment.



Picture 4. Concept plan (Stage A, Phases 1-6)

APPROACH

Art, culture, history, and accessibility for the public are top priorities for the proposed Center for Excellence in Curricular Engagement.

Background:

“...Youth violence is widespread in the United States. It is the second leading cause of death for young people between the ages of 10 and 24. Some nationwide statistics are:

- 5,764 young people age 10 to 24 were murdered-an average of 16 each day-in 2007.
- Over 656,000 violence-related injuries in young people age 10 to 24 were treated in U.S. emergency rooms in 2008.
- In a 2009 nationwide survey, 32% of high school students reported being in a physical fight during the past 12 months.
- Nearly 6% of high school students in 2009 reported taking a gun, knife, or club to school in the 30 days before the survey.
- An estimated 20% of kids between 6th and 10th grade reported being involved in bullying.

Youth violence is an important public health problem that affects everybody, independent of age, gender, race, and geographical area. At a time when resources are limited and there is great competition for those resources, it's essential that efforts to prevent youth violence take advantage of the knowledge of what really works...”

(Sources: www.cdc.gov/injury/wisqars/; <http://www.cdc.gov/ViolencePrevention/>)

Methods & Results:

Since 2008, the Action School has developed extracurricular activities in an effort to prevent violence among desperate youth. We currently have about 2% of at-risk children enrolled in supplementary activities designed to teach them be a positive force in society.

The Action School supports comprehensive approaches to the problem of youth violence by establishing community networks dedicated to prevention. Changing the environment and decreasing exposure to negative influences leads to a better-rounded, self-confident youth, which in turn reduces the number of violent crimes in the community. Community-wide partnerships are key in these efforts. Our program supports communities by providing training, information, and collaborative tools specifically designed to prevent youth violence.

Approach:

Accordingly, the Action School’s strategic mission is to provide a “greater sense of self and community”. The best medium to achieve our goal is curricular engagement, which consists of teaching, learning, and providing scholarship that engages students, faculty, and community members in a respectful and collaborative environment. We create an opportunity for young people not only to identify, address, and critically reflect on various issues, but also to increase knowledge, grow personally, and enhance individual and collective capacity to learn and think decisively in order to produce leadership and citizenship.

This proposal for the Center for Excellence is just a small part of the Action School’s global assignments, but we consider it crucial in the following points:

- ❖ Serving society and shaping the future of our youth;
- ❖ Enriching community life with involvement in the fine arts, museums, theatrical performances, and scientific achievements;
- ❖ Communicating with the public sector to inspire others to make the world a better place for all of humanity.

OVERVIEW, SPECIFICS & DETAILS

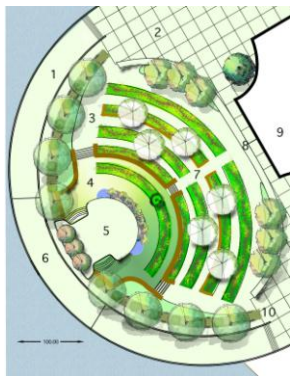
As described in the Executive Summary, the proposal has several projected phases. Foremost is the Battleship Museum—a replica of the USS Missouri (BB-63)—alongside the Action School Plaza. The plaza will be symmetrically shaped and encircled by a promenade at the upper level, with a shaded alley in its center adorned by an 18th-century French garden. At the back, a golden spire will rise from the Museum of Anthropology of Art & Natural Curiosity. A ramp at the lower level will lead to a wharf, where passengers can board a river tram.



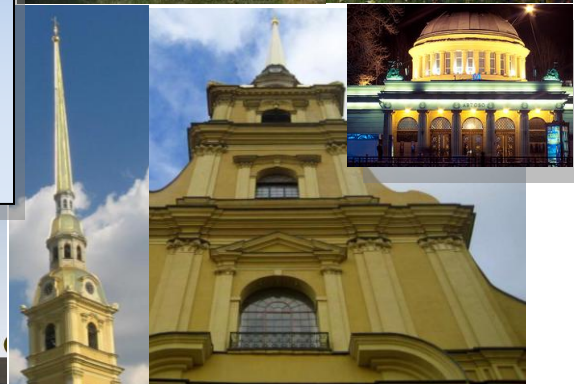
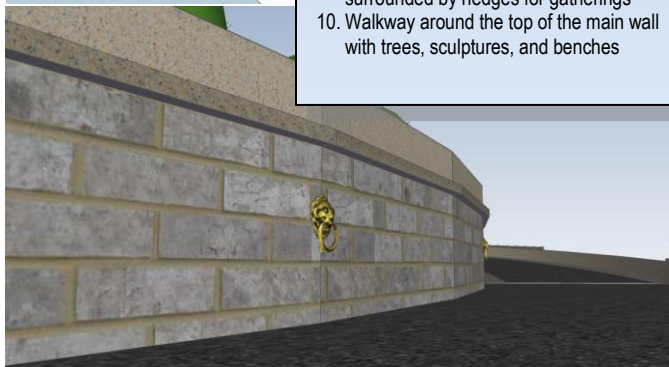
The USS Missouri Battleship Museum will be a national symbol of the selfless heroism displayed during WWII. Open year round; the museum will host new exhibitions quarterly, developed by the Action School.

The lower level of the plaza and steps at the parterre garden accesses a wharf, where visitors can explore the Anacostia River aboard river trams.

The Action School Plaza is a dual-level promenade & French garden.



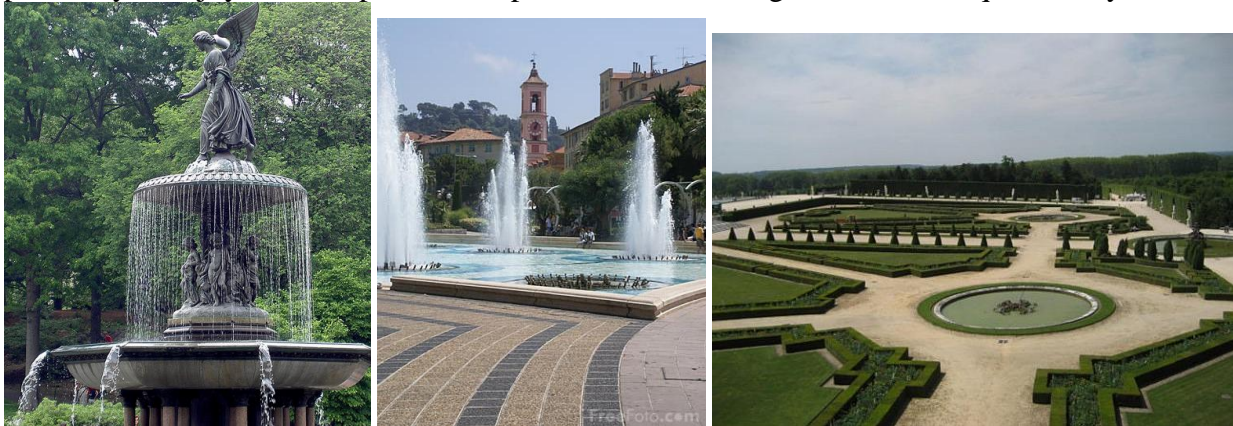
1. The ramp from the top level, winding around the outside of the main structural wall.
2. The plaza (upper level)
3. Pathways among garden beds
4. Lower garden
5. Pavilion with small pools facing the museum, suitable for eating and dancing
6. Wharf providing access to the river
7. Central walkway on sight line with a focal sculpture in lower garden
8. Fence, wall, or trellis separating the garden from the main plaza
9. Museum area, possibly a lawn surrounded by hedges for gatherings
10. Walkway around the top of the main wall with trees, sculptures, and benches



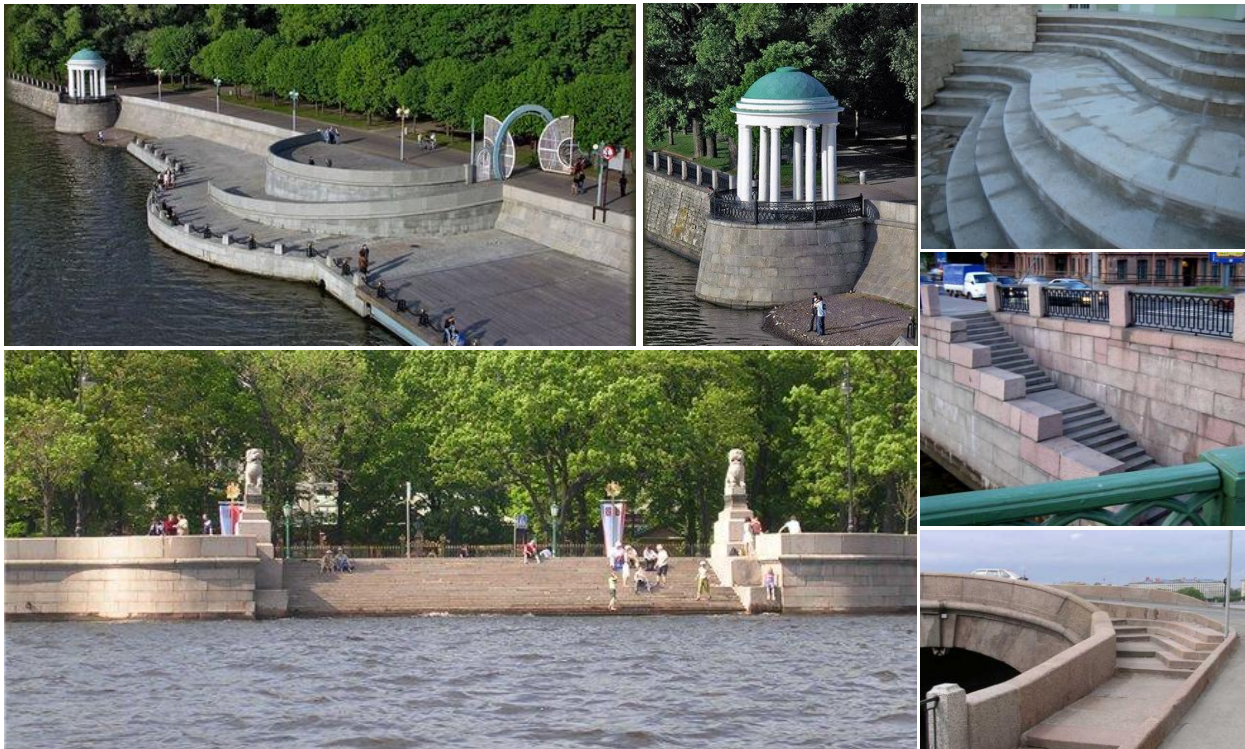
The Anna-Marie Chapel and golden spire of the Saint Denis-Nicholas Cathedral at the Anthropology and Curiosity Museum.

Note: these and all below photos are just examples of the design

The Action School Plaza will function as the primary organizational element in Anacostia Park. The area between the Plaza, the Anthropology Museum, Park of Fountains, and English knot garden will be a marketplace filled with carts and kiosks. It will be the backbone connecting the plaza, museums, restaurants, and other venues. In addition to creating a safe pedestrian environment along Anacostia Park, the proposal will also fully accommodate service functions, such as maintenance operations, fire egress, tenant service, as well as art fairs, food festivals, parades, and possibly a festive market. The embankment can be used as a grand common area for hosting such events. Ample shaded dining and lounging areas will encourage visitors and passersby to enjoy a marketplace atmosphere whether during a festival or a quiet sunny afternoon.



Waterfront enhancements will be constructed within the Anacostia River area of the park. Changes to the existing landscape will consist of improvements to the 8-foot-wide pedestrian pathway and greenery to be planted along the river. Improvements to the existing sidewalk along the park would result in a 30- to 60-foot-wide walkway. A landscaped path would be constructed to facilitate travel between the plaza and Battleship Museum.



Improvements in this area will be constructed on top of existing river wall and consist of a dual-level promenade. The promenade will have lower level waterfront for personal recreation, such as walking, and an upper level for more cultural uses, such as concert events and/or exhibits. The overall width of this area will be approximately 440 feet. The lower area will be paved over the existing riprap above the high-water mark, and the upper boardwalk with seating walls will be located adjacent to the garden area. Work in this area may require some pile installation in riprap areas to facilitate construction of the dual-level walkway. Improvements in this vicinity also include enhancing the boat mooring area along the breakwater.



Aesthetic improvements, such as new and replacement landscaping, will be implemented adjacent to and between the plaza edges and museums.

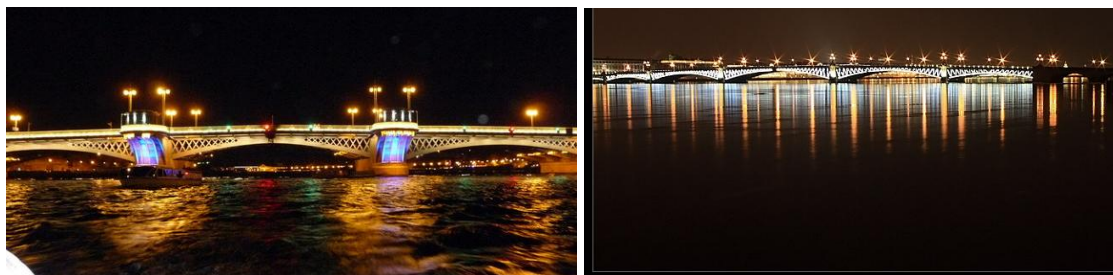
Other project elements in this area will include benches, info blocks and light boxes for seating, new lighting standards, concrete treatments, landscaping, a storyboard, and public interest signage. As part of the project, signs will be placed at points of interest along the walkway and will highlight specific views and notable facts about each visited area. Figures 1-4 below illustrate what the signs would look like. The Action School will develop guidebooks for the Anacostia Park Program. The guidebooks will be designed to take visitors along a self-guided tour and would be available at all park Info Centers, various restaurants, attractions in the area, and online. Signs in the contiguous project area would be placed at designated locations such as the wharf, the battleship, park of fountains, and museums.



Figure 1-2-3-4

In addition, the intent of the Frederick Douglass Bridge lighting project is to create a distinctive, signature work of art that will enliven the public environment. The project has to be a partnership between the Action School and the bridge owners, who operate and maintain the bridge.

The Action School will hold a design competition for the lighting project. To select the final winners, teams will be judged on: aesthetic vision, expertise in large-scale lighting projects, commitment to energy conservation and sustainable materials, and ability to develop preliminary concept proposals.





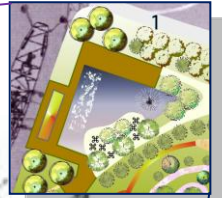
Picture 6. A sample map of the diverse attractions projected to be displayed at the Park of Fountains.

In Pictures 7-11 below, one can see the elements of original line-art sketches and classic fine art, architecture, fashion, sculpture, and design, with an emphasis on values as they relate to one another.



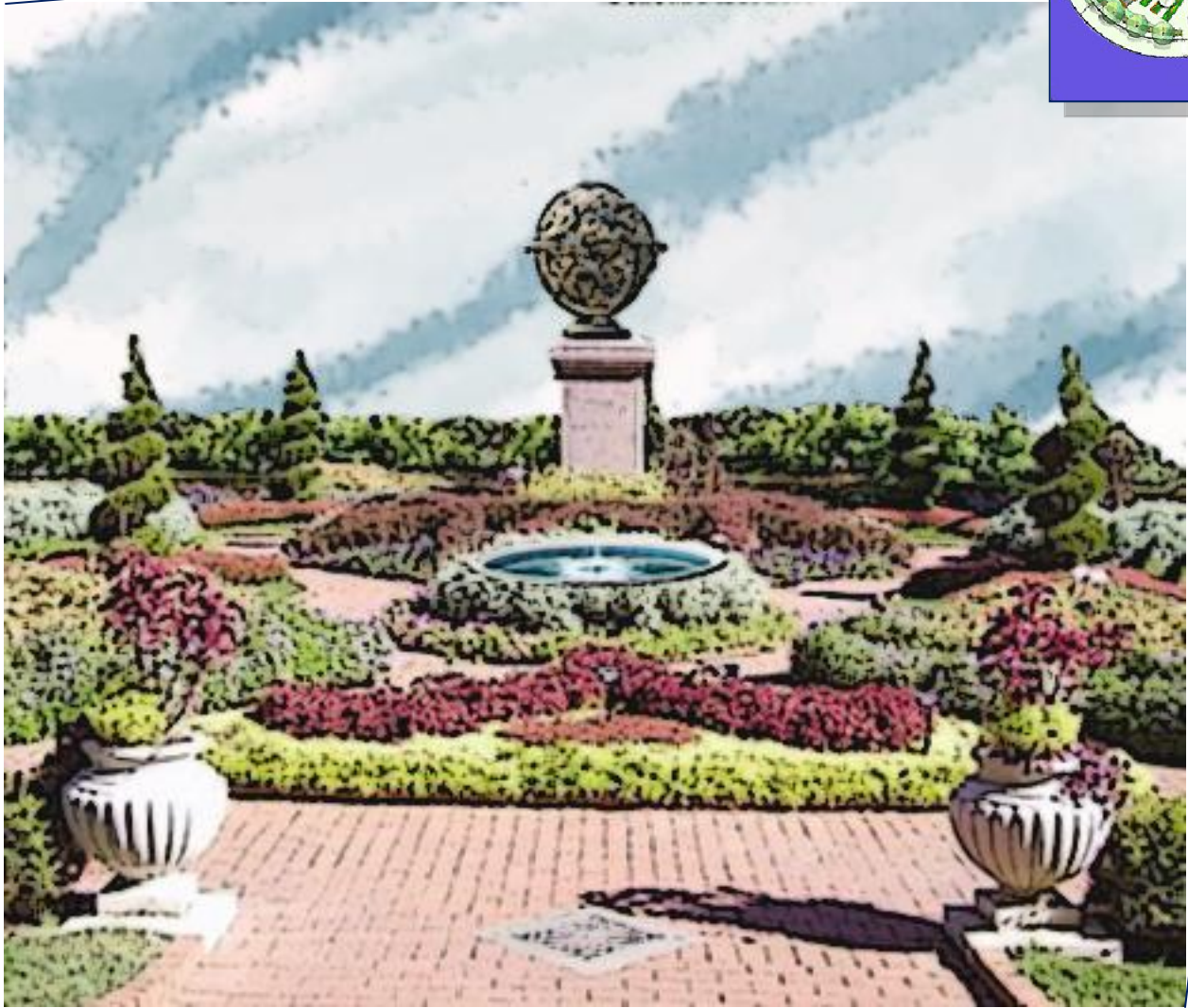
Picture 7. A sketch of steps at the parterre garden. A sample view of approach from a lower right-hand corner.

The area is designed with both a river wall and river walk, which create a beautiful trail along the water's edge for strolling as well as for resting and observing. In keeping with the plaza's symmetrical design, there will be identical steps on opposite sides of the Action School Plaza.



Picture 8, 9. (top): the arbor area of the Battleship Museum with the water feature and stepping pads over the pool. Sketch sample view of approach; (bottom): fragment of a Chapel Plaza.

Situated near a key attraction, the Battleship Museum, this area features a vast display of natural beauty. As small fountains bubble in the adjacent shallow pool, visitors can take a break, sample fare from local restaurants, and enjoy classical music from a nearby symphony orchestra.

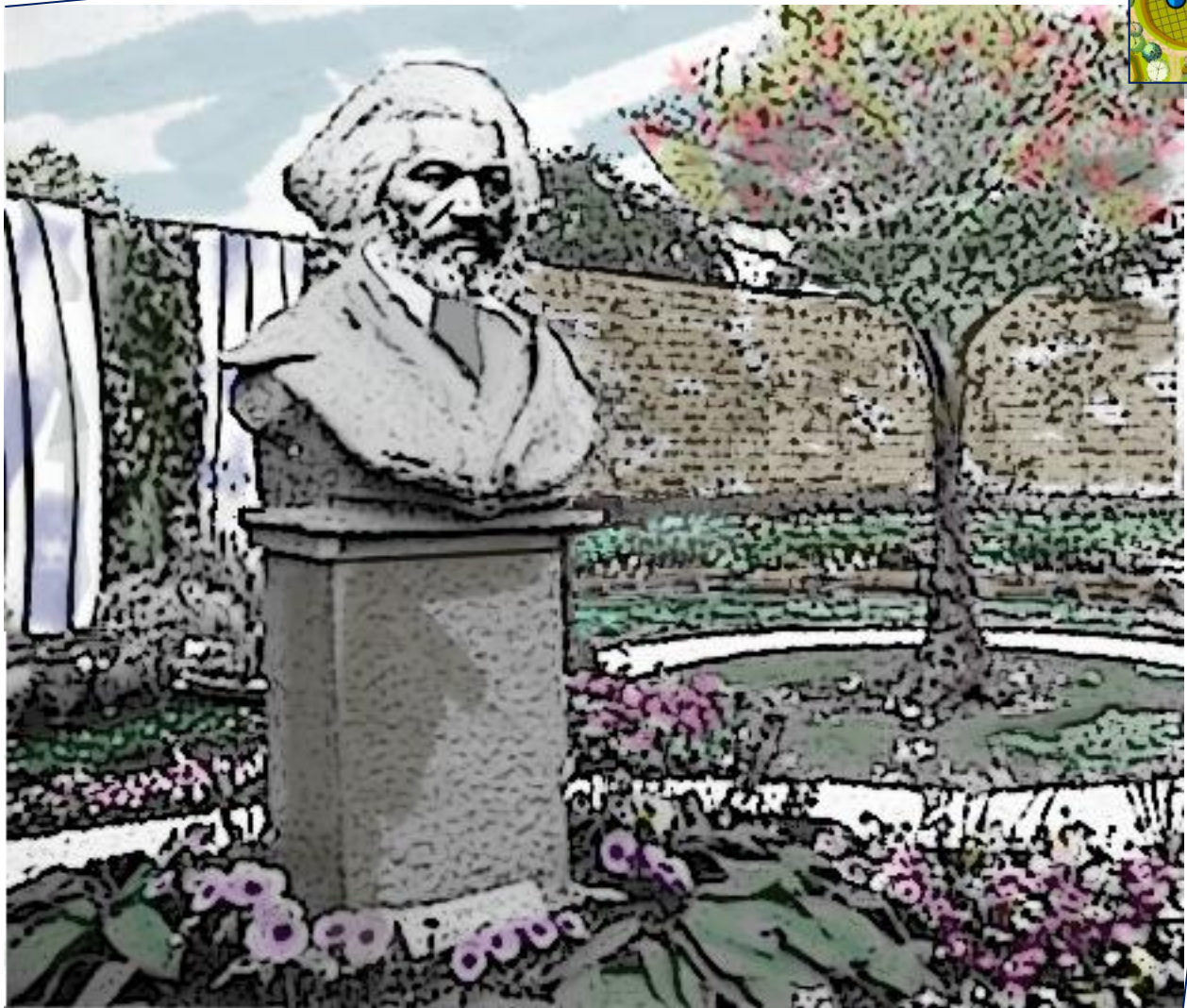


Picture 10. Parterre area with the fountain and decorative flowerbed. Sample sketch view of approach.

An example of the English knot garden, this parterre is square with elaborate interior patterns of planting beds consisting of four smaller squares with wide paths that intersect one another. It is best viewed from high vantage points to fully reveal its pattern. Plant choice will focus on herbs and multicolored flowers to highlight the design.

Below is a sample list of the overall criteria applied to the garden's design:

- ❖ Borders that are made from several shrubs of varying shades of green.
- ❖ Shrubs should be clipped in such a way as to create compartments and pathways within the general space.
- ❖ Passements, or braided patterns, should be formed out of shrub elements.
- ❖ Repeating geometry, or arabesque, will be used, along with selective use of topiary.
- ❖ Distinctive forms and interlacing patterns should be clearly visible and proportional to the whole.



Picture 11. Frederick Douglass memorial, sketch sample view of approach. The Action School will hold an international competition for a remarkable statue.

This memorial commemorates the noted orator and abolitionist Frederick Douglass. Born Frederick Augustus Washington Bailey in 1817, he was sent as a young boy from his home near Easton, Maryland, to Baltimore, to be a house servant. There, with the assistance of his master's wife, Douglass learned to read and write. In 1838 he escaped slavery and fled to New York City, where he married Anna Murray, whom he had met in Baltimore. Soon thereafter he changed his name to Frederick Douglass. In 1841 he addressed a convention of the Massachusetts Anti-Slavery Society in Nantucket and so greatly impressed the group that they immediately hired him as an agent. He died in 1895. Located at the Plaza near the Anthropology Museum, the memorial will be surrounded by diverging wings with his companions in bas-relief. In acknowledgement of their achievements, selected students will be asked to participate in a wreath-laying ceremony.

CONCLUSION

The proposed Center for Excellence in Curricular Engagement is not just a park with diverse attractions. It is a business venture, which will create new, year-round jobs, including a full-time maintenance crew and security patrol. Equally important, this project will provide contract opportunities for local businesses, which will help stimulate the local economy. In the initial stages, jobs in construction will need to be filled. Furthermore, the project intends to create jobs for employees with disabilities. In addition to the attractions featured in this document, the Action School has another plan, which will be outlined in Stage B of the proposal, to include the following:

- ❖ A year-round exhibit center with a special emphasis on children's art
- ❖ An innovative children's library and music school
- ❖ A free-of-charge or low-cost movie theater for family-oriented films
- ❖ The Dionysus Classical Theater of Drama and Comedy geared towards youth
- ❖ The School of Scientific Experiments & Practices (elementary, middle, high-school together)
- ❖ The Technical Science & Applied Creativity Center for enhanced learning
- ❖ The Puppetry and Children Circus of clowns and acrobats
- ❖ A planetarium and live space exploration center
- ❖ A children's television studio, filmmaking and photography center
- ❖ Convention Center for any community public events

More attractions bring with them more restaurants, cafés, and shops, which in turn create new low- and moderate-wage jobs for the community, as well as fascinating opportunities for young people.

Anticipated community benefits from this project include:

- ❖ Clean-up of contaminated land and protection of water basin resources
- ❖ Infrastructure improvements that will foster small business growth
- ❖ Safe pedestrian infrastructure
- ❖ Mixed-use, mixed-income neighborhoods and living-wage jobs
- ❖ New jobs for young people, seniors, and veterans
- ❖ Increased tax revenue
- ❖ Economic development and a sustainable economy for the city
- ❖ Enhanced tourism and popularity

The preliminary cost estimate of the Phase 1 of Stage A of the project is \$7-\$10 million, which is expected to be obtained through private sources, grants, and fundraising. The Action School will commit to fundraising efforts as well as the initiation of all obligatory procedures of the RFP, such as bidding, procurement and decision process in order to clearly identify the risks and benefits of the project, and hold a competition for designing certain phases of the project. Once funding is secured, a feasibility study on the project will be conducted.

We are grateful to have received preliminary support from the stakeholders who have embraced this plan as a means to turn a former liability into an extraordinary public amenity. We look forward to a continued dialogue with all future stakeholders throughout the park's planning and development stages. Anacostia is one of the most distinctive landscapes in our Nation's Capital, and the extraordinary nature and scope of the Anacostia site offer an unprecedented opportunity to create a range of cultural attractions that will complement and enhance other facets of the plan. With art installations, performance venues, workshop space, and fascinating cultural events, the expansive park will serve as a cultural destination like no other, engaging Washingtonians and all visitors in the city's unique, energetic, and creative community, the Center for Excellence in Curricular Engagement.

TIMETABLE

	Description of Work	Required Time Frame
Phase 1	Create the Battleship Museum and the foundation of the Action School Plaza	9 -12 months
Phase 2	Develop the pedestrian connection from the F. Douglass Bridge to the Battleship Museum; build the sidewalks, embankment alley ⁽³⁾ between Plaza and 11th St. Bridge, ramps to the waterfront ⁽¹⁾ and gazebos ⁽²⁾ .	10 -15 months
Phase 3	Build the Sculpture Garden & Promenade ⁽⁵⁾ on the upper-level of the Plaza ⁽⁹⁾ and create the Performance Stage Facility ⁽⁷⁾ . Embellish bridges, walking paths, lighting, buildings, etc. Re-grade the landscape; install a graphic display for the wharf ⁽¹³⁾ at the lower-level ⁽⁹⁾ of the Plaza.	4 -6 months
Phase 4	Lay the foundation of the Anna-Marie Chapel & Saint Denis-Nicholas Cathedral ⁽¹⁰⁾ ; build the Anthropology of Art & Natural Curiosity; build the Children of Hope mirrored fountains ⁽⁸⁾ on the Plaza.	4 -6 months
Phase 5	Build the Park of Fountains; revamp the Anacostia Metro Station; upgrade the parking lot; implement the bridge lighting project; start building thematic memorials.	12-18 months
Phase 6	Erect the Frederick Douglass Monument. Improve the Anacostia Metro Station area and lighting on the bridge.	12 months

BUDGET

	Description of Work	Anticipated Costs
Phase 1	Create the Battleship Museum and the foundation of the Action School Plaza	\$7-10 Million
Phase 2	Develop the pedestrian connection from the F. Douglass Bridge to the Battleship Museum; build the sidewalks, embankment alley ⁽³⁾ between Plaza and 11th St. Bridge, ramps to the waterfront ⁽¹⁾ and gazebos ⁽²⁾ .	Budget to be determined
Phase 3	Build the Sculpture Garden & Promenade ⁽⁵⁾ on the upper-level of the Plaza ⁽⁹⁾ and create the Performance Stage Facility ⁽⁷⁾ . Embellish bridges, walking paths, lighting, buildings, etc. Re-grade the landscape; install a graphic display for the wharf ⁽¹³⁾ at the lower-level ⁽⁹⁾ of the Plaza.	Budget to be determined
Phase 4	Lay the foundation of the Anna-Marie Chapel & Saint Denis-Nicholas Cathedral ⁽¹⁰⁾ ; build the Anthropology of Art & Natural Curiosity; build the Children of Hope mirrored fountains ⁽⁸⁾ on the Plaza.	Budget to be determined
Phase 5	Build the Park of Fountains; revamp the Anacostia Metro Station; upgrade the parking lot; implement the bridge lighting project; start building thematic memorials.	Budget to be determined
Phase 6	Erect the Frederick Douglass Monument. Improve the Anacostia Metro Station area and lighting on the bridge.	Budget to be determined

RELATED RESOURCES

www.actionsch.com/dump/doc/CEiCE/Center_for_Excellence_in_Curricular_Engagement_slideshow.pdf
www.actionsch.com/dump/doc/CEiCE/Action_School_booklet_20100327.pdf
www.actionsch.com/dump/doc/CEiCE/Center_for_Excellence_in_Curricular_Engagement_LOI.pdf
www.actionsch.com/dump/doc/CEiCE/Center_for_Excellence_in_Curricular_Engagement_Proposal.pdf
www.actionsch.com/projects/
apha.confex.com/apha/138am/webprogram/Paper218503.html
ssl.brookes.ac.uk/anthro-art/index.html
www.cdc.gov/injury/wisqars/
www.cdc.gov/ViolencePrevention/pdf/yv-factsheet-a.pdf
www.neighborsnw.org/AnacostiaRestoration.htm
www.jdland.com/dc/southcap.cfm
www.washingtonpost.com/wp-dyn/content/article/2008/02/14/AR2008021401819.html
www.absoluteastronomy.com/discussion/Anacostia_River
www.fhwa.dot.gov/dcdiv/projects/proj11stbridge.htm
www.theanacostiawaterfront.com/ProjectTeams.do
www.nps.gov/anac/planyourvisit/maps.htm
www.theanacostiawaterfront.com
www.washingtonexaminer.com/local/dc/Anacostia_-D_C__s-new-arts-hub--556577-101406939.html
ddoe.dc.gov/ddoe/cwp/view,a,1210,q,497563,ddoeNav,|31007|,.asp
www.nationalparks.org/discover-parks/index.cfm?fa=viewpark&pid=anac
www.conservationfund.org/news/anacostia-river-water-trail-guide
dc.metblogs.com/2006/05/01/dc-interstate-exhibit/
www.hillrag.com/CCN_Website09/publicationhtml/papers/EOR/0809/PoplarPoint.html
www.history.navy.mil/photos/pl-usa/pl-dc/wny/wny-oa-o.htm
www.planning.dc.gov/planning/cwp/view,q,581766.asp
www.congressheightsontherise.com/2010/03/sponsored-post-anacostia-river-realty.html
www.history.navy.mil/photos/images/h79000/h79896kc.htm
www.flickr.com/photos/otavio_dc/2398721198/
urbanplacesandspaces.blogspot.com/2006/09/sierra-club-on-11th-street-bridges-in.html
urbanplacesandspaces.blogspot.com/2005/12/public-meetings-this-week-on-11th-st.html
www.cityofart.net/bship/stonewall.html
www.capitolriverfront.org/go/riverwalk-trail
keepunitedindc.blogspot.com/2008_02_01_archive.html
www.flickr.com/photos/dandc/2621628270/sizes/o/in/photostream/

ABOUT US

Founded in 2006, the Action School, Inc. 501(c)(3) is organized exclusively for charitable, educational, and scholastic-scientific purposes. Studies by the American Psychiatric Association (APA) show that children involved in extracurricular activities are less prone to violent behavior. Furthermore, students with a high self-esteem derived from developing their unique skills are less prone to violence. In our effort to stem the causes of violence, our primary purpose is to offer extracurricular activities for students aged five through fifteen. Our goal is to prevent and eventually end the overwhelming number of violent crimes against children in our schools, on our college campuses, and in our communities. We aim to improve the creative skills of student's thereby raising their self-confidence while diminishing the lure to become involved with criminal activity. We believe our mission will diversify the community's cultural fabric, bring a spirit of improvisation to problem-solving, develop more tolerant points of view, and open new horizons for talented individuals.

The Action School produces original ideas—ideas that inspire others and raise society's quality of life. Action School is aimed at teaching, enriching and nurturing the innovative, artistic, musical, cinematic and theatrical abilities of children. The Action School discovers hidden talents and brings them to life through extraordinary experiences that challenge and excite young minds.

Our vision is to continually engage the public sector in order to inspire others to make the world a better place for all humanity.

Contact us: <http://www.actionsch.com/contactus.shtml>